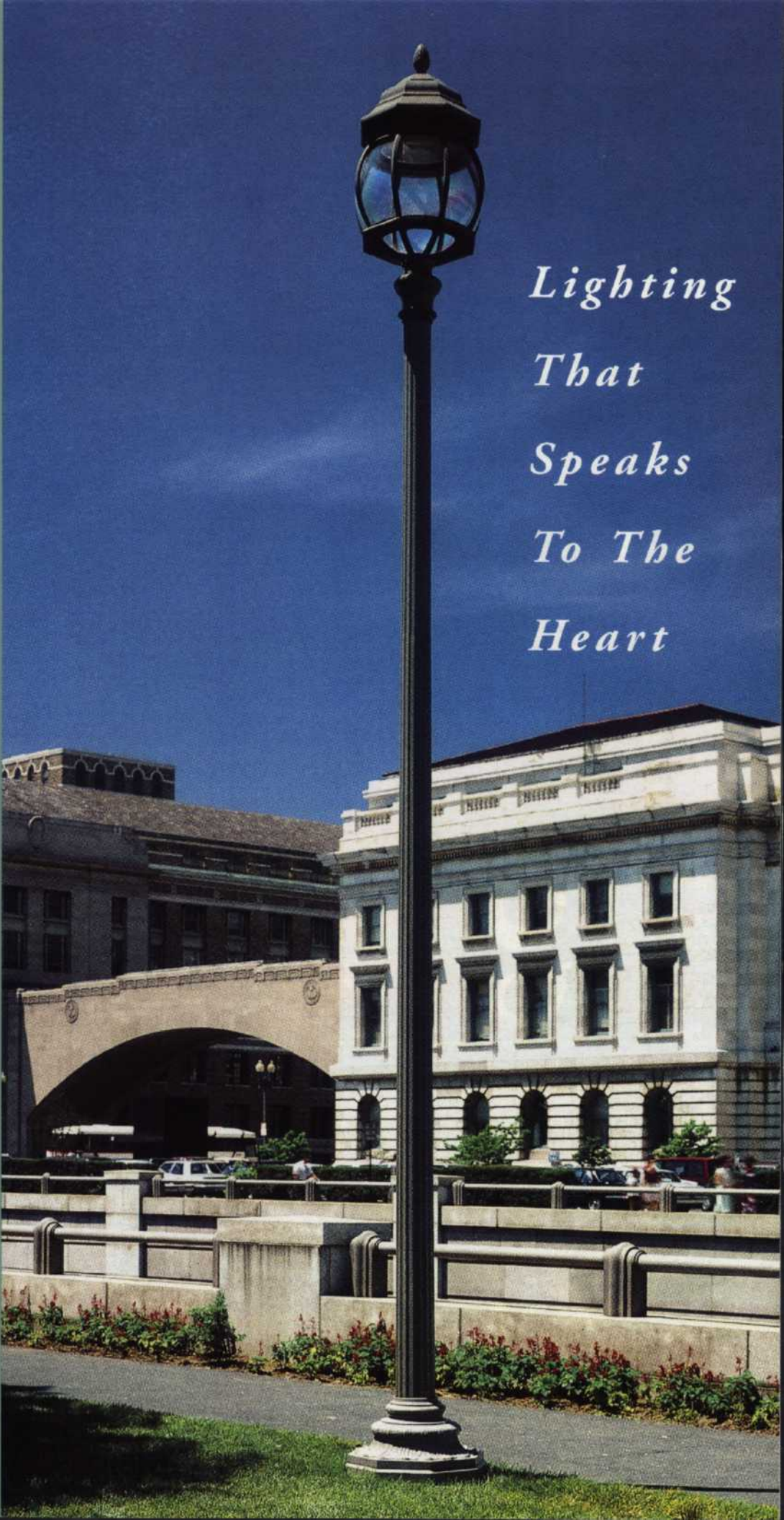




Spring City



*Lighting
That
Speaks
To The
Heart*

AN AMERICAN FOUNDRY

Spring City is located in Chester County, Pennsylvania, east of the Appalachians. We have been crafting fine cast iron products right here on the banks of the Schuylkill River since 1843, and today more American cities and towns, developments and universities select Spring City for traditional cast iron lighting than any other source.



Since
I
8

These are just a few of the hundreds of designs available to you from Spring City. While many applications call for the faithful and precise reproduction of cherished historical pieces, Spring City customers often work with our designers to produce custom pieces of surpassing beauty. For detailed information and pricing, contact us directly or your Spring City representative.



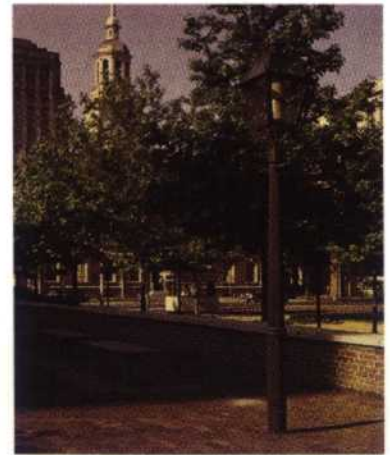
Worthington:

*Worthington, Ohio.
12' 6" height. Base is 17" x
20" across flats.*



Harrisburg:

*Capitol Park, Harrisburg, Pa.
6' 5" to 10' 11" heights, 20" octagonal base.*



Independence:

*Independence Hall, Philadelphia, Pa.
7' 3" height, 5" octagonal base.*



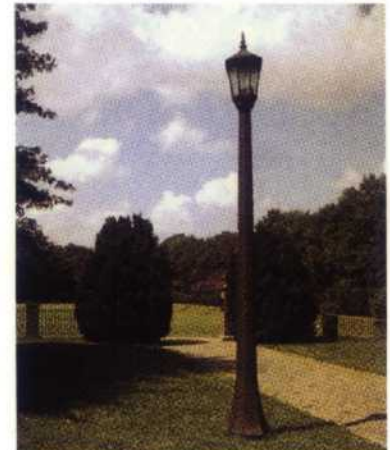
Parkwood:

*Kansas City, Kansas.
10', 12', and 13' heights. 19" octagonal base. Parkwood luminaire. Also available with steel shaft.*



New Frontier:

*Pioneer Plaza, El Paso, Texas.
12' and 18' heights from ground level to top of center ornamental section of shaft. 24" octagonal base. Also available with steel shaft.*



Arcadian:

*Western State Hospital, Staunton, Va.
12', 12' 6", and 12' 10" heights, 20" base, or 10' with 16" base.*



Ivy:

*Heritage State Park, Springfield, Mass.
12' 6" height, 21" O.D. base. Higher base is available, increasing height from 12' 6" to 13' 9". Also available with steel shaft.*



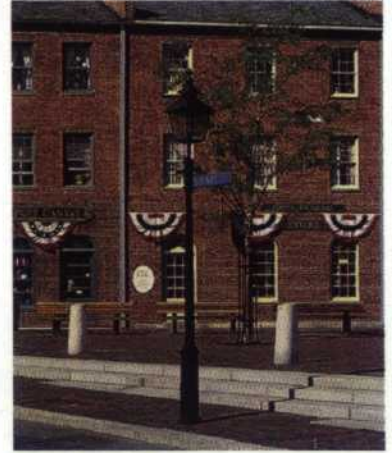
New Bedford:

*Public Library, New Bedford, Mass.
8' 1" height, 17" base.*

Spring City



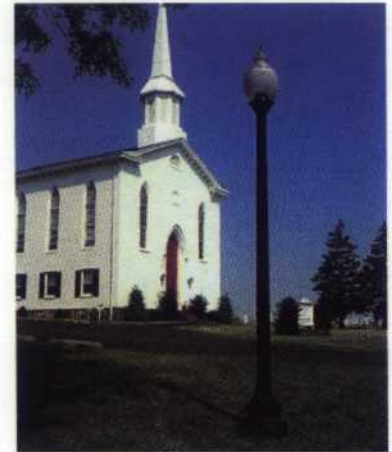
Borough:
Madison, N.J.
 8' 6" and 10' height with 14" octagonal base.



Newburyport:
Newburyport, Mass.
 9' 10" height, 11" base with 13" square embedded sub-base. Available as bollard. Also available with steel shaft.



Edgewater:
Hattiesburg, Miss., Univ. of Southern Miss.
 10' height, 18" octagonal base, or 12' height with 16" or 20" octagonal base. Also available with steel shaft.



Villa:
Zion Lutheran Church, East Pikeland, Pa.
 10' to 12' 3" height, 17" and 21" O.D. bases. Also available with steel shaft.



Grand Washington Twin:
Coast Savings Bank, Los Angeles, Calif.
 8' to 28' heights, 25" octagonal base. Available with 5 luminaires. Also available with steel shaft.



Washington:
Bethesda, Md.
 10' to 12' heights, and 17" and 21" O.D. bases. Available as bollard. Also available with steel shaft.



Madison:

Cooperstown, N.Y.

Heights vary from 6' 3" to 12' 6", 18" O.D. base. Available with twin arms for 2 luminaires and as a bollard. Also available with steel shaft.



Villa Twin:

Grand Circus Park, Detroit, Mich.

12' height, 21" O.D. base, 36" between light centers, 13' 9" from light centers to ground level. Also available with steel shaft.



Brooklyn:

Brooklyn Bridge, Brooklyn, N.Y.

10' height, 16" x 22" base. A replica of the 1883 original, the first post designed specifically for a luminaire using electricity as a power source.



Old D.C. Mall:

Washington, D.C. on grounds of the Smithsonian Institution, with the Washington Monument in the background. 18' height, Freer Gallery Luminaire, 25" octagonal base. (See cover)

City Springs Spirals



Quality Hill:

*Quality Hill section, Kansas City, Mo.
10' high, 14" square base. Also available
with steel shaft.*



Winchester:

*Winchester, Kentucky.
10' 1" height, 16" square base. Available as
single, twin, 4- and 5-way-luminaire.*



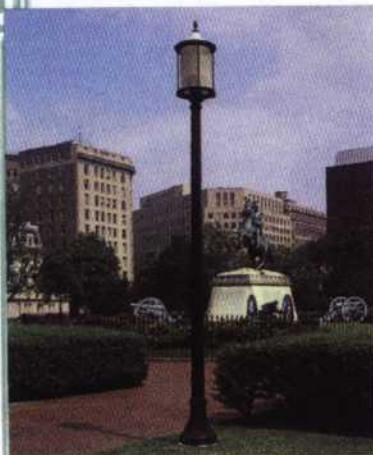
Lechmere:

*Ballfinch Square, Cambridge, Mass.
17' 2" high, excluding luminaire; overall
height: 21' 7", with 19" O.D. base.
Lechmere luminaire.*



Galtier:

*Galtier Plaza, St. Paul, Minn.
7' 1" high, Ball Globe luminaire, with 8"
O.D. base. Overall height: 8' 7". Centerline
to centerline of twin globes: 33". Available
46" shorter for pedestal mounting.*



Saratoga:

*Lafayette Park, Washington, D.C. (facing
White House). 12' 9" height, 16" octagonal
base. Saratoga luminaire.*



Northampton:

*Northampton, Mass.
20' height, 24" O.D. base. Available up to a
maximum height of 30', excluding arm.
Standard Cobra Head luminaire. Also avail-
able with steel shaft.*

THE CAST IRON CHOICE

Materials speak clearly in a language of their own, and no other metal carries such a complex density of human feeling as cast iron. Its architectural appeal extends beyond its evocative beauty, however. Cast iron is vibration-dampening, extraordinarily durable, nearly impervious to corrosion, and will remain virtually maintenance free for many decades after installation.



Princeton:

*Princeton University, Princeton, N.J.
9', 10', 11', 12', and 13' heights, 10" base.
Available as bollard.*



Hancock:

*Manati, Puerto Rico, Hacienda La Esperanza.
9', 10', 11', 12', and 13' heights, 10" O.D.
base. Available as bollard in heights from 42"
to 52". Also available with steel shaft.*



Franklin:

*Society Hill section, Philadelphia, Pa.
8' 9" height, 5" square base-embedded instal-
lation. Available in heights up to 12'.*



Bishop's Crook:

Beverly Park, Beverly Hills, Calif.



Securing The Design Theme

Spring City can unify your site with beautifully matched posts, traffic control pieces, bollards, and fixtures. Achieving such unity of expression helps to create the sense of place that designers strive for.



Merion:

*Lower Merion Township, Pa.
6' 11", 10" square base-embedded installation can carry luminaire or, as shown here, street sign.*

ADVANCED LIGHTING

Our roots are deep in American history, but our lighting performance is state-of-the-art. Complete technical support services, including computer-assisted design, are available for all Spring City installations. Independent testing facilities are used for luminaire performance evaluation, and all photometric data is readily available on IES format disk.



Pasadena:

*City Hall, Pasadena,
Calif. 9' 6" high,
9" octagonal base.*



SPRING CITY

Electrical Manufacturing Company

P.O. Box 19, Spring City, Pennsylvania 19475

Phone (610) 948-4000

Fax (610) 948-5577