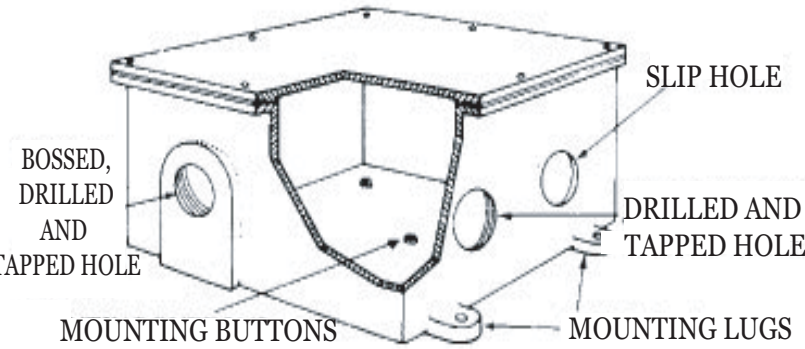


# CONDUIT ENTRANCES



Conduit Spacing- Minimum spacing between conduit centers and their distance from corner and back of box are given in tables below. When not specified, spacing will be selected at our discretion.

## THREAD CHART

| CONDUIT SIZE | NUMBER OF THREADS PER INCH | WALL THICKNESS REQUIRED INCHES |               |           |
|--------------|----------------------------|--------------------------------|---------------|-----------|
|              |                            | 5 THREADS                      | 3 1/2 THREADS | 3 THREADS |
| 3/8"         | 18                         | 9/32                           | 7/32*         | 3/16*     |
| 1/2" to 3/4" | 14                         | 3/8                            | 1/4           | 7/32      |
| 1" to 2"     | 11-1/2                     | 7/16                           | 5/16          | 9/32      |
| 2-1/2" to 6" | 8                          | 5/8                            | 7/16          | 3/8       |

Conduit Entrances -- Sizes and locations should be furnished on a drilling template (or comparable sketch) shown page 15.

Conduit Entrances -- Types Should be specified as follows:

1. Slip Hole (drilled only -- for conduit clearance.)
2. Drilled and Tapped Hole (D&T) -- If the thread chart in the next column shows that the box's wall thickness does not permit required number of threads, specify bosses.
3. Bossed, Drilled and Tapped hole to provide a minimum of five full threads (Boss-D&T.)
4. Boss only, for drilling and tapping in field -- specify wall thickness required.

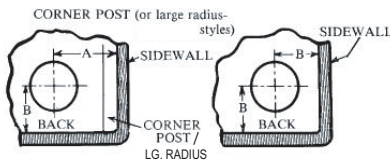
UL requirements: 1/4" minimum wall thickness. DH & DH-A Boxes-- 3-1/2 threads, other box styles - 3 threads  
\*1/4" Minimum Wall Thickness Required

## RECOMMENDED CONDUIT LOCATIONS AND SPACINGS

Minimum Spacing of Conduit From Sides and Back

ALLOWS FOR LOCKNUT & BUSHING CLEARANCE.

EXPLOSION-PROOF SEALS OR UNIONS REQUIRED ADDED SPACING.



| Conduit Size  | 1/2   | 3/4    | 1     | 1 1/4 | 1 1/2 | 2     | 2 1/2 | 3     | 3 1/3 | 4     | 5     | 6     |
|---------------|-------|--------|-------|-------|-------|-------|-------|-------|-------|-------|-------|-------|
| Dimensions--A | 1 1/4 | 1 1/38 | 1 5/8 | 1 7/8 | 2     | 2 3/8 | 2 5/8 | 3     | 3 1/4 | 3 5/8 | 4 1/4 | 4 7/8 |
| Dimensions--B | 1     | 1      | 1 1/8 | 1 3/8 | 1 1/2 | 1 3/4 | 2 1/8 | 2 1/2 | 2 7/8 | 3 1/8 | 3 3/4 | 4 3/8 |

IN INCHES

| Size of Conduit | Minimum Space Between Centers of Conduits Inches |       |       |       |       |       |       |       |       |       |       |       |
|-----------------|--|-------|-------|-------|-------|-------|-------|-------|-------|-------|-------|-------|
|                 | 6  | 5     | 4     | 3 1/2 | 3     | 2 1/2 | 2     | 1 1/2 | 1 1/4 | 1     | 3/4   | 1/2   |
| 1/2             | 5  | 4 3/8 | 3 5/8 | 3 3/8 | 3     | 2 5/8 | 2 3/8 | 2     | 1 7/8 | 1 3/4 | 1 5/8 | 1 1/2 |
| 3/4             | 5 1/8  | 4 1/2 | 3 3/4 | 3 1/2 | 3 1/8 | 2 3/4 | 2 1/2 | 2 1/8 | 2     | 1 7/8 | 1 3/4 |       |
| 1               | 5 1/4  | 4 5/8 | 4     | 3 5/8 | 3 1/4 | 3     | 2 5/8 | 2 3/8 | 2 1/4 | 2     |       |       |
| 1 1/4           | 5 1/2  | 4 7/8 | 4 1/8 | 3 7/8 | 3 1/2 | 3 1/8 | 2 7/8 | 2 1/2 | 2 3/8 |       |       |       |
| 1 1/2           | 5 5/8  | 5     | 4 1/4 | 4     | 3 5/8 | 3 1/4 | 3     | 2 5/8 |       |       |       |       |
| 2               | 6  | 5 3/8 | 4 5/8 | 4 1/4 | 3 7/8 | 3 5/8 | 3 1/4 |       |       |       |       |       |
| 2 1/2           | 6 1/4  | 5 5/8 | 4 7/8 | 4 5/8 | 4 1/4 | 3 7/8 |       |       |       |       |       |       |
| 3               | 6 5/8  | 6     | 5 3/8 | 5     | 4 5/8 |       |       |       |       |       |       |       |
| 3 1/2           | 7  | 6 1/4 | 5 5/8 | 5 1/4 |       |       |       |       |       |       |       |       |
| 4               | 7 1/4  | 6 5/8 | 5 7/8 |       |       |       |       |       |       |       |       |       |
| 5               | 8  | 7 1/4 |       |       |       |       |       |       |       |       |       |       |
| 6               | 8 5/8  |       |       |       |       |       |       |       |       |       |       |       |