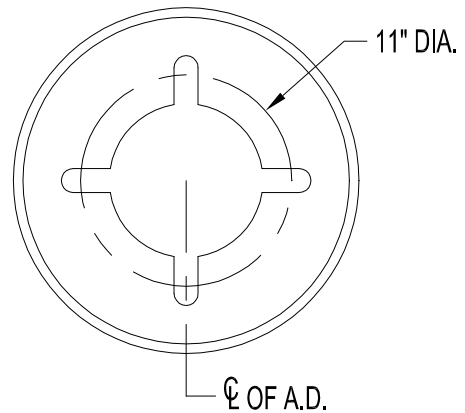
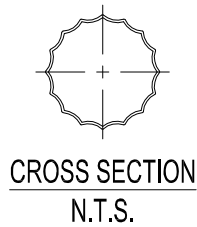
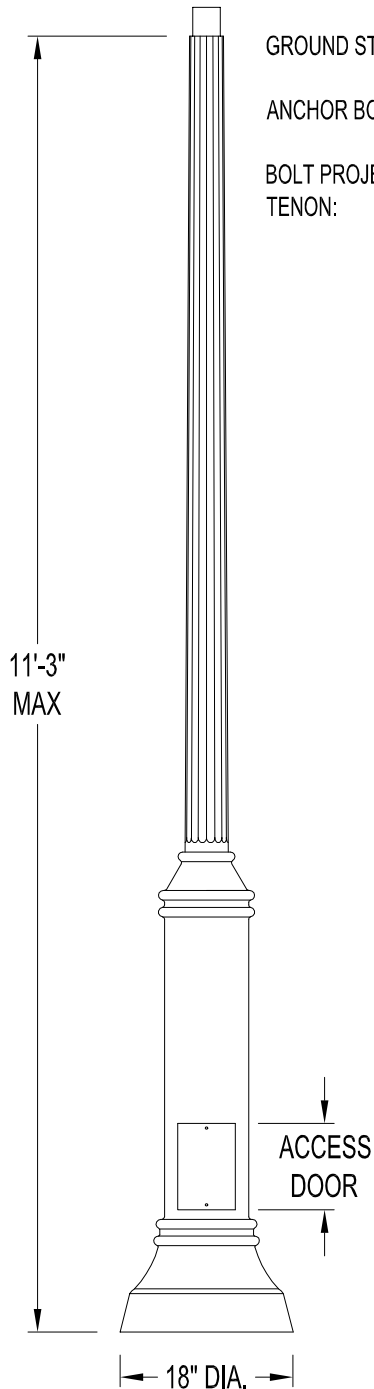


LAMP POST SPECIFICATIONS

STYLE:	CENTRAL CITY DISTRICT
HEIGHT:	_____'-_____"
MAX HEIGHT:	11'-3"
BASE:	18" DIAMETER
MATERIAL:	
SHAFT:	4 1/2" DIA. - 16 SHARP FLUTE - TAPERED ALUMINUM SHAFT - □ (A12) .125" □ (A18) .188" WALL
BASE:	CAST ALUMINUM ALLOY ANSI 356 PER A.S.T.M. B26-95
FINISH:	PRIME PAINT THEN FINISH SHERWIN WILLIAMS ACROLON - PLEASE ADVISE COLOR
ACCESS DOOR:	LOCATED IN BASE SECURED WITH TAMPER PROOF HEX SOCKET SECURITY MACHINE SCREWS
GROUND STUD PROVISIONS:	DRILL AND TAP INSIDE WALL OF BASE OPPOSITE ACCESS DOOR TO ACCOMMODATE A 1/4"-20 GROUND STUD (STUD SUPPLIED BY OTHERS)
ANCHOR BOLTS:	(4) 3/4" DIA. X 24" LONG + 3" HOOK (FULLY GALVANIZED WITH 1 GALVANIZED NUT AND 1 GALVANIZED WASHER PER BOLT)
BOLT PROJECTION:	3" REQUIRED
TENON:	_____ " DIA. X _____ " HIGH



Spring City Electrical Mfg. Co.

HALL AND MAIN STREETS - P.O. BOX 19 - SPRING CITY, PA. 19475
PHONE (610) 948-4000 FAX (610) 948-5577
E-mail ADDRESS: sales@springcity.com

DESCRIPTION

APSCTR-18-__-6S-A__

PDF