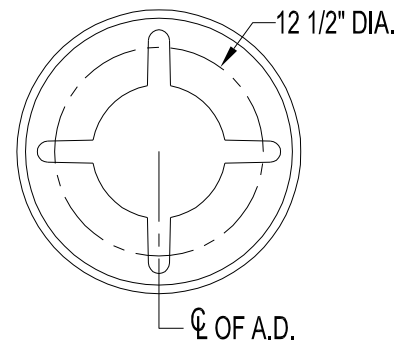
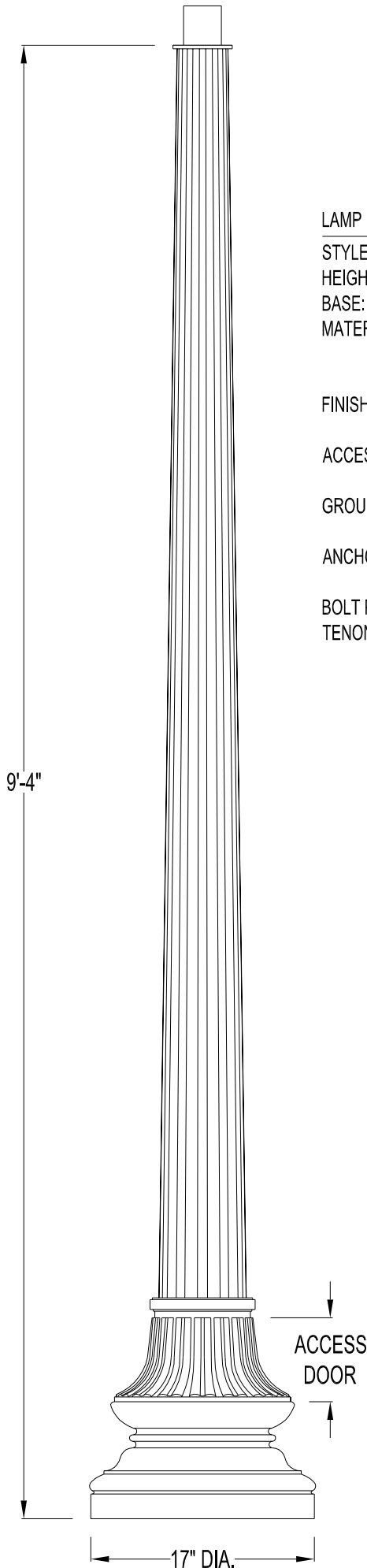


LAMP POST SPECIFICATIONS

STYLE: SOUTHAMPTON
 HEIGHT: 9'-4"
 BASE: 17" DIAMETER
 MATERIAL: ☐ (A) 1 PIECE, CAST ALUMINUM ALLOY ANSI 356 PER A.S.T.M. B26-95
☐ (I) 1 PIECE, CAST IRON PER A.S.T.M. A48-83 CLASS 30
☐ (D) 1 PIECE, CAST DUCTILE IRON PER A536-84 GRADE 65-45-12
 FINISH: PRIME PAINT THEN FINISH SHERWIN WILLIAMS ACROLON - PLEASE ADVISE COLOR
 ACCESS DOOR: LOCATED IN BASE SECURED WITH TAMPER PROOF HEX SOCKET SECURITY MACHINE SCREWS
 GROUND STUD PROVISIONS: DRILL AND TAP INSIDE WALL OF BASE OPPOSITE ACCESS DOOR TO ACCOMMODATE A 1/4"-20 GROUND STUD (STUD SUPPLIED BY OTHERS)
 ANCHOR BOLTS: (4) 3/4" DIA. X 24" LONG + 3" HOOK (FULLY GALVANIZED WITH 1 GALVANIZED NUT AND 1 GALVANIZED WASHER PER BOLT)
 BOLT PROJECTION: 3" REQUIRED
 TENON: ____" DIA. X ____" HIGH



Spring City Electrical Mfg. Co.

HALL AND MAIN STREETS - P.O. BOX 19 - SPRING CITY, PA. 19475
 PHONE (610) 948-4000 FAX (610) 948-5577
 E-mail ADDRESS: sales@springcity.com

DESCRIPTION

_PSSOU-17-09.33

PDF