

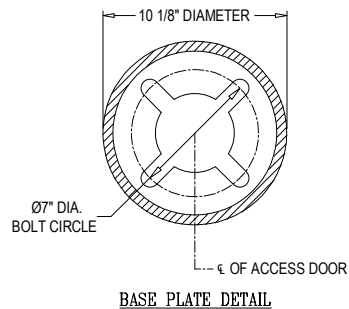
LAMP POST SPECIFICATIONS

STYLE: RADNOR
 BASE: 10 1/8" DIAMETER
 HEIGHT: MAX HEIGHT 16'-0" (PLEASE ADVISE BELOW)
 MATERIAL: CAST ALUMINUM ALLOY ANSI 356 PER A.S.T.M. B26-95
 BASE: ROUND TAPERED SHAFT - 16 FLUTE - ALUMINUM TUBE ALLOY 6063
 SHAFT: PLEASE ADVISE BELOW
 FINISH: DRILL AND TAP INSIDE WALL OF BASE OPPOSITE ACCESS DOOR TO ACCOMMODATE A 1/4"-20 GROUND STUD (STUD SUPPLIED BY OTHERS)
 GROUND STUD PROVISIONS: (4) 3/4" DIA. X 17" LONG + 3" HOOK (FULLY GALVANIZED WITH 1 GALVANIZED NUT AND 1 GALVANIZED WASHER PER BOLT)
 ANCHOR BOLTS: 2" REQUIRED
 BOLT PROJECTION: PLEASE ADVISE BELOW
 TENON: 2" REQUIRED
 CATALOG NO.: APSRDX-10-6S-TN-C

POLE HEIGHT	CAT. NO.
10' POLE HEIGHT	10.00
12' POLE HEIGHT	12.00
14' POLE HEIGHT	14.00
16' MAX. POLE HEIGHT	16.00
OTHER POLE HEIGHT	XX.XX

TENON	CAT. NO.
2 7/8" DIA. X 3" HIGH	2.88-3.00
3" DIA. X 3" HIGH	3.00-3.00
3 1/2" DIA. X 3" HIGH	3.50-3.00
4" DIA. X 3" HIGH	4.00-3.00
X.XX" DIA. X X.XX" HIGH	X.XX-X.XX

FINISH	CAT. NO.
POWDER COAT - PLEASE ADVISE RAL #	U
PRIME PAINT THEN FINISH PAINT SHERWIN WILLIAMS - PLEASE ADVISE COLOR	W



Spring City Electrical Mfg. Co.

HALL AND MAIN STREETS - P.O. BOX 19 - SPRING CITY, PA. 19475
 PHONE (610) 948-4000 - FAX (610) 948-5577 - WWW.SPRINGCITY.COM

DESCRIPTION

THE RADNOR 10" DIA. ALUMINUM BASE
 WITH 16 FLUTE SHAFT