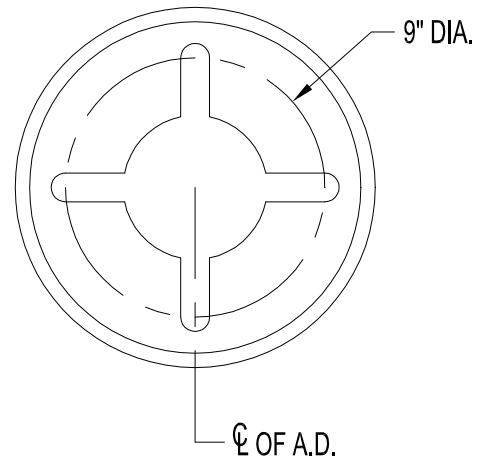
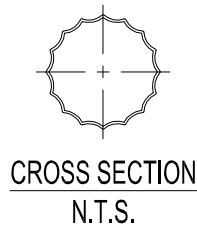


# LAMP POST SPECIFICATIONS

STYLE:	NORTHAMPTON
HEIGHT:	_____'-_____"
MAX HEIGHT:	16'-6"
BASE:	12" DIAMETER
MATERIAL:	
SHAFT:	5 1/2" DIA. - 16 SHARP FLUTE - TAPERED ALUMINUM SHAFT - □ (A12) .125" □ (A18) .188" WALL
BASE:	CAST ALUMINUM ALLOY ANSI 356 PER A.S.T.M. B26-95
FINISH:	PRIME PAINT THEN FINISH SHERWIN WILLIAMS ACROLON - PLEASE ADVISE COLOR
ACCESS DOOR:	LOCATED IN BASE SECURED WITH TAMPER PROOF HEX SOCKET SECURITY MACHINE SCREWS
GROUND STUD PROVISIONS:	DRILL AND TAP INSIDE WALL OF BASE OPPOSITE ACCESS DOOR TO ACCOMMODATE A 1/4"-20 GROUND STUD (STUD SUPPLIED BY OTHERS)
ANCHOR BOLTS:	(4) 3/4" DIA. X 24" LONG + 3" HOOK (FULLY GALVANIZED WITH 1 GALVANIZED NUT AND 1 GALVANIZED WASHER PER BOLT)
BOLT PROJECTION:	3" REQUIRED
TENON:	_____ " DIA. X _____ " HIGH

16'-0"



12" DIA.

ACCESS  
DOOR



**Spring City Electrical Mfg. Co.**

SINCE 1943  
HALL AND MAIN STREETS - P.O. BOX 19 - SPRING CITY, PA. 19475  
PHONE (610) 948-4000 FAX (610) 948-5577  
E-mail ADDRESS: sales@springcity.com

DESCRIPTION

APSNRT-12-\_\_-6S-A\_\_

PDF