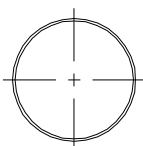


This drawing is property of Spring City Elect. Mfg. and is issued to the recipient with the understanding that it shall not be copied, duplicated, passed on to unauthorized parties, nor used for any purpose other than that for which it is specifically furnished except with Spring City's written permission.

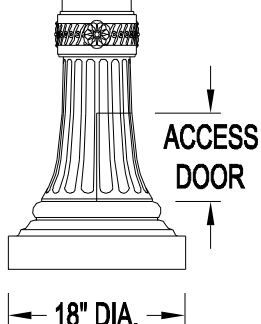
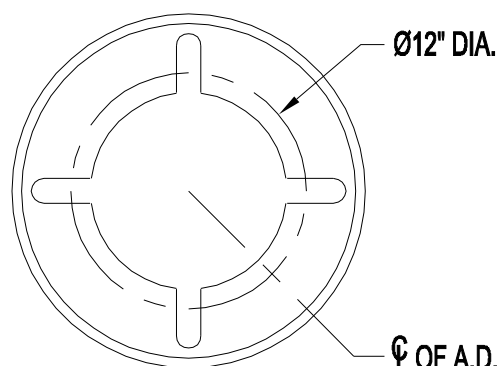
# LAMP POST SPECIFICATIONS

STYLE: OLDTOWN  
 HEIGHT: 16'-0"  
 MAX HEIGHT: 27'-0"  
 BASE: 18" DIAMETER  
 MATERIAL:  
   SHAFT: 7" DIA. - SMOOTH - TAPERED ALUMINUM SHAFT - □ (A12) .125" □ (A18) .188" WA  
   BASE: CAST ALUMINUM ALLOY ANSI 356 PER A.S.T.M. B26-95  
 FINISH: PRIME PAINT THEN FINISH SHERWIN WILLIAMS ACROLON - PLEASE ADVISE COLC  
 ACCESS DOOR: LOCATED IN BASE SECURED WITH TAMPER PROOF  
   HEX SOCKET SECURITY MACHINE SCREWS  
 GROUND STUD PROVISIONS: DRILL AND TAP INSIDE WALL OF BASE OPPOSITE ACCESS DOOR TO  
   ACCOMMODATE A 1/4"-20 GROUND STUD (STUD SUPPLIED BY OTHERS)  
 ANCHOR BOLTS: (4) 3/4" DIA. X 24" LONG + 3" HOOK (FULLY GALVANIZED WITH  
   1 GALVANIZED NUT AND 1 GALVANIZED WASHER PER BOLT)  
 BOLT PROJECTION: 3" REQUIRED  
 TENON:       " DIA. X       " HIGH

16'-0"



CROSS SECTION  
N.T.S.



Spring City Electrical Mfg. Co.

HALL AND MAIN STREETS - P.O. BOX 19 - SPRING CITY, PA. 19475  
 PHONE (610) 948-4000 - FAX (610) 948-5577 - WWW.SPRINGCITY.COM

DESCRIPTION

APSOLD-18-\_\_ST-A\_\_